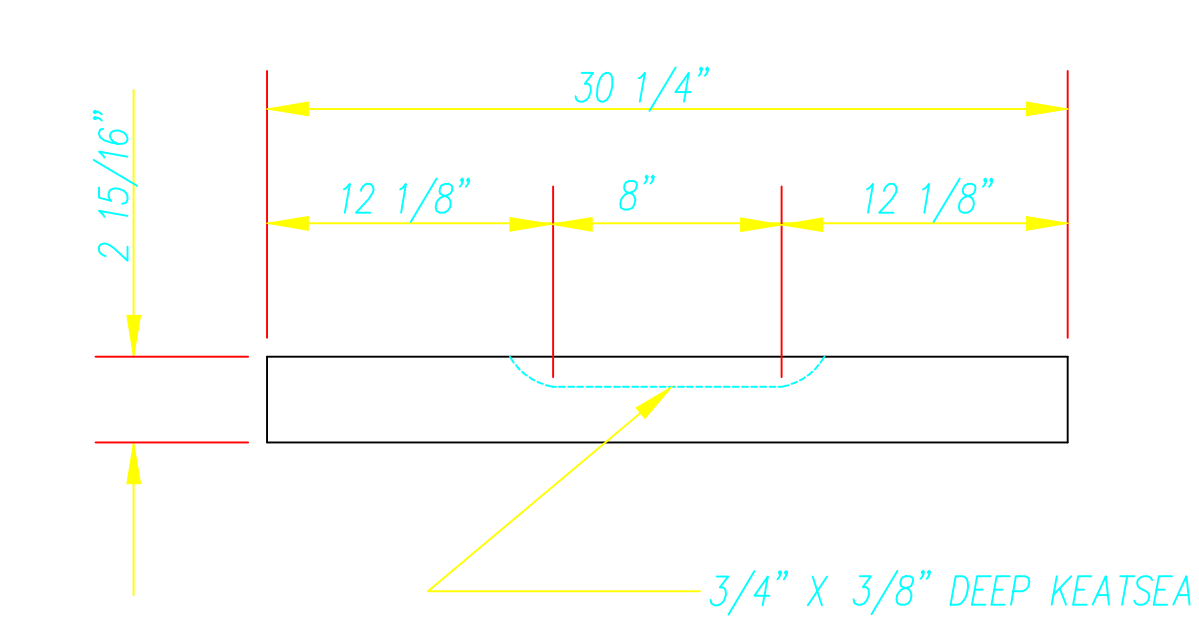
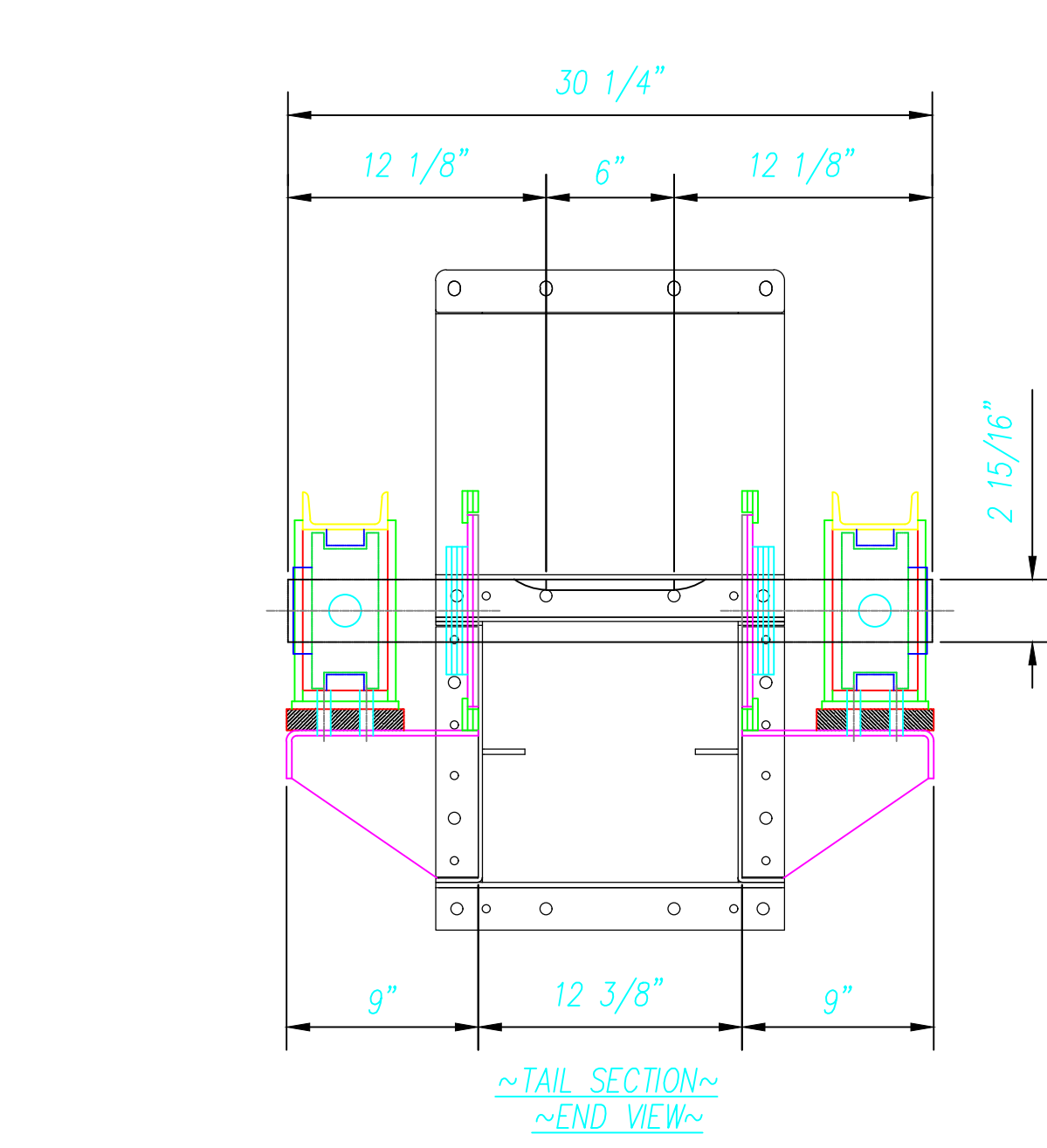
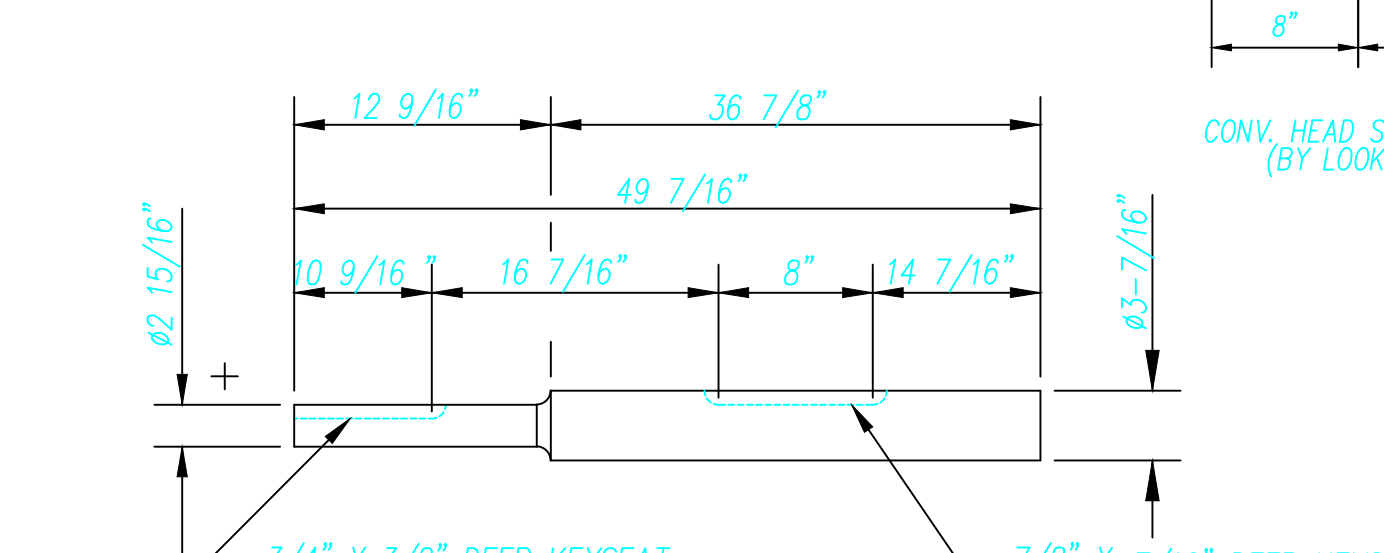


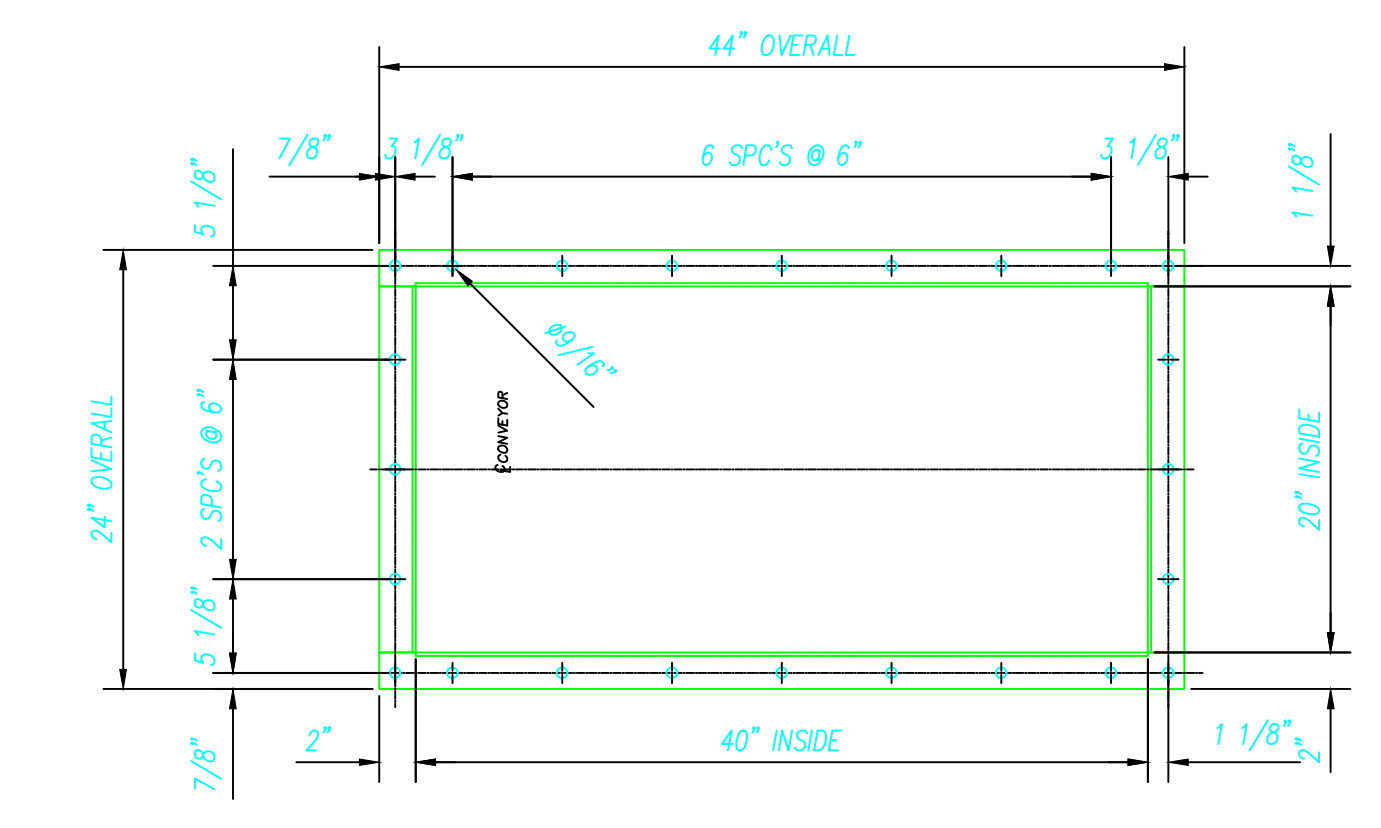
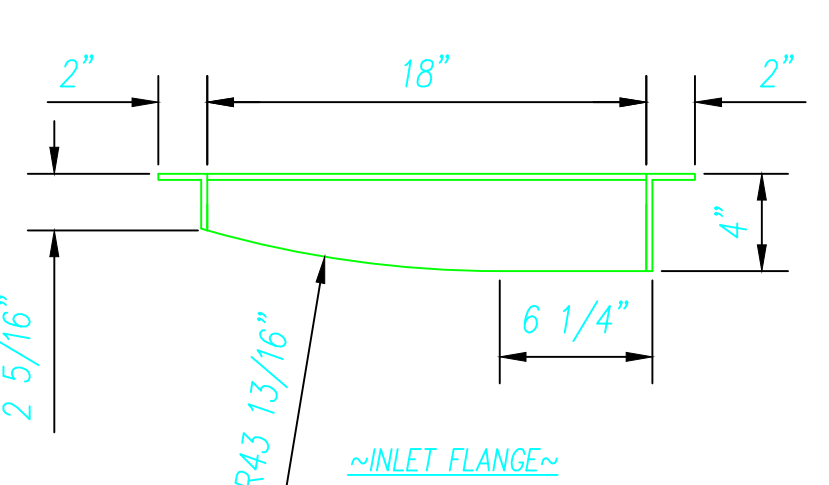
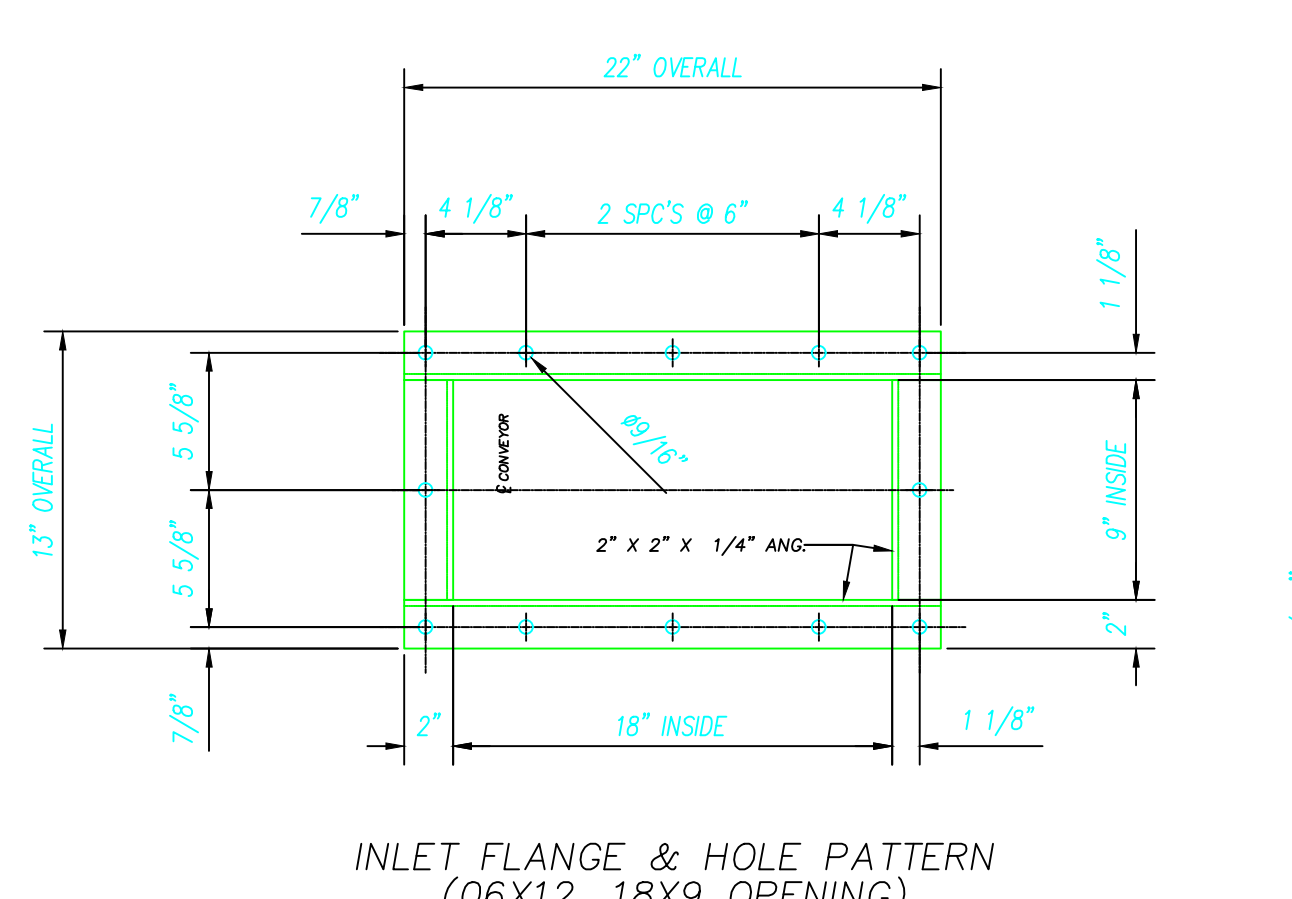
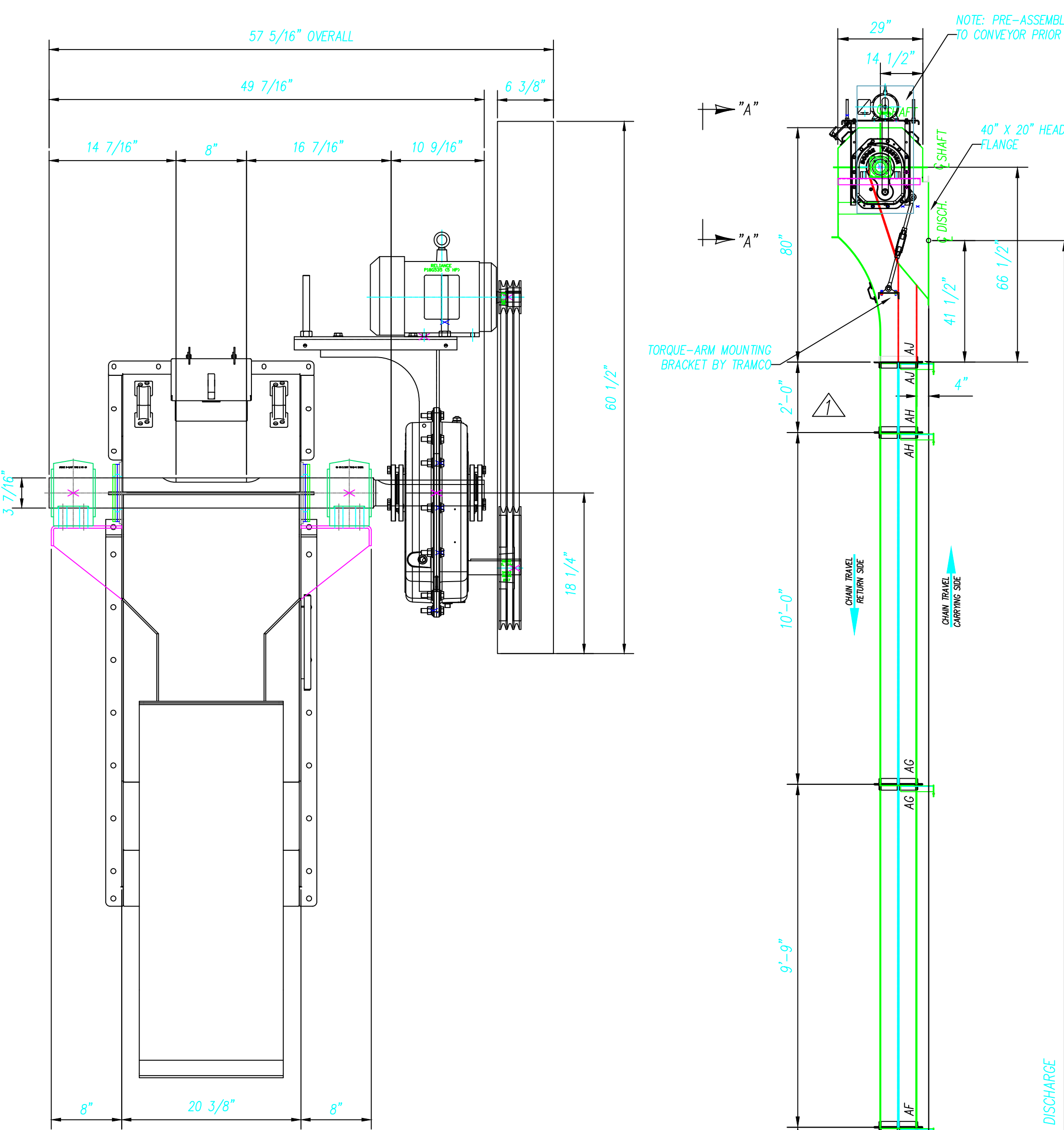
ITEM	QTY.	MARK NO.	DESCRIPTION
1	1	08-2188-002-005	HD,FLAR,06HX12W,#3-7/16", (NEAR SIDE),ASSY <HEAD ASSY>
1	1	08-2188-002-002	HD,SHAFT,#3-7/16",#9 7/16" LG. <HEAD SHAFT>
1	1	-----	13T,WH124,#3-7/16",SPLIT SPROCKET W/B.K.,S.S.,H.T.
2	2	3640	BRNG,DODGE,P4BE307R,#3-7/16" <HEAD BEARING>
2	2	STANDARD	HD,BRNG,SUPPORT <HEAD BEARING SUPPORT>
2	2	BRB001315-10001	RING,SEAL,HD,#3-7/16",ASSY
2	1	08-2188-002-007	TAIL,SHAFT,12W,BKEYE,#2-15/16",3/16",ASSY <TAIL ASSY>
1	1	08-2188-002-003	TAIL,SHAFT,12W,BKEYE,#2-15/16" (30 1/4" LG.) <TAIL SHAFT>
1	1	-----	13T,WH124,#2-15/16",SPLIT SPROCKET W/B.K.,S.S.,H.T.
2	2	3545	BRNG,REX,Z19-2215,TU,#2-15/16" <TAIL BEARING>
2	2	BRB002215-10001	RING,SEAL,TAIL,#2-15/16",ASSY
2	2	GUAD002215-10081	TU,PULL,#2-15/16"XB TRAVEL,ASSY <TAIL TAKEUP>
3	3	08-2188-002-009	INT,06HX12W,10'-0" LG.,3/16",ASSY
4	1	08-2188-002-010	INT,06HX12W,9'-9" LG.,3/16",ASSY
5	1	08-2188-002-011	INT,06HX12W,7'-0" LG.,3/16",ASSY
6	1	08-2188-002-012	INT,06HX12W,3'-9" LG.,3/16",ASSY
7	1	08-2188-011-006	INT,06HX12W,2'-0" LG.,3/16",ASSY
8	1	08-2188-002-013	CRV,UP,06HX12W,08R,90DG,3/16",ASSY
9	14	7099-02	WH124,CHAIN12W,10'-0" LG.,16.00"SPACING
10	1	7099-02	WH124,CHAIN12W,9'-0" LG.,16.00"SPACING
11	96	10307	PIN,ALIGNMENT,3/8,COTTER (SHIP LOOSE)
11	16	-----	CPLG PINS,TIT,WH124,HEAT-TREATED,W/COT (SHIP LOOSE)
12	119	7017-12	FL,WPR,WH124,BENT,30DG,5 15/16 x 11" LG.,3/4" U.H.M.W.
13	119	7017-45	FL,BACK,WH124,3 7/16 x 9 1/4" LG.,3/16,MS
14	96	10365	BOLT,1/2 X 1-1/2 <FLANGE> (SHIP LOOSE)
15	4	10386	BOLT,3/8 X 1,CSK,SS316 <MOTOR> (SHIP LOOSE)
16	4	12060	BOLT,3/8 X 1,CSK,SS316 <REDUCER> (SHIP LOOSE)
17	3	3200	CAULKING COMPOUND (SHIP LOOSE)
18	1	RELIANCE	5 HP 1800 RPM 3/60/230/460 VOLT W-G EXPLOSION PROOF MOTOR W/ 184T FRAME
19	1	DODGE	TAS215H40 SHAFT MOUNT REDUCER WITH 2-15/16" BORE COMPLETED WITH:
20	1	3A3.2/B3.6-1210	3.2" 3A GROOVE MOTOR SHEAVE W/ TAPERLOCK HUB
21	1	DODGE	#1210 TAPERLOCK MOTOR SHEAVE BUSHING W/ 1 1/8" BORE, KS.
22	1	3A13.2/B13.6-2517	13.2" 3A GROOVE REDUCER SHEAVE SHEAVE W/ TAPERLOCK HUB
23	1	DODGE	#2517 TAPERLOCK REDUCER SHEAVE BUSHING W/ 1 5/8" BORE, KS.
24	3	GATES	A92 HI-POWER V-BELTS (SHIP LOOSE)
25	1	DODGE	TAS215BG BELT GUARD (POSITION B)
26	1	DODGE	TORQUE ARM,TAS215TA
27	1	08-2188-002-004	9" X 18",ASSY <INLET FLANGE> (SHIP LOOSE)
28	1	BDB050800-10001	INSP,DOOR,05WXB08,ASSY (FITTED)
29	9	08-2188-002-014	SPT,6H,ASSY <SUPPORT> (SHIP LOOSE)
30	1	08-2188-002-015	TORQUE ARM MOUNTING BRACKET
2	2	BF-1465	INSTALLATION AND MAINTENANCE MANUALS (SHIP LOOSE)



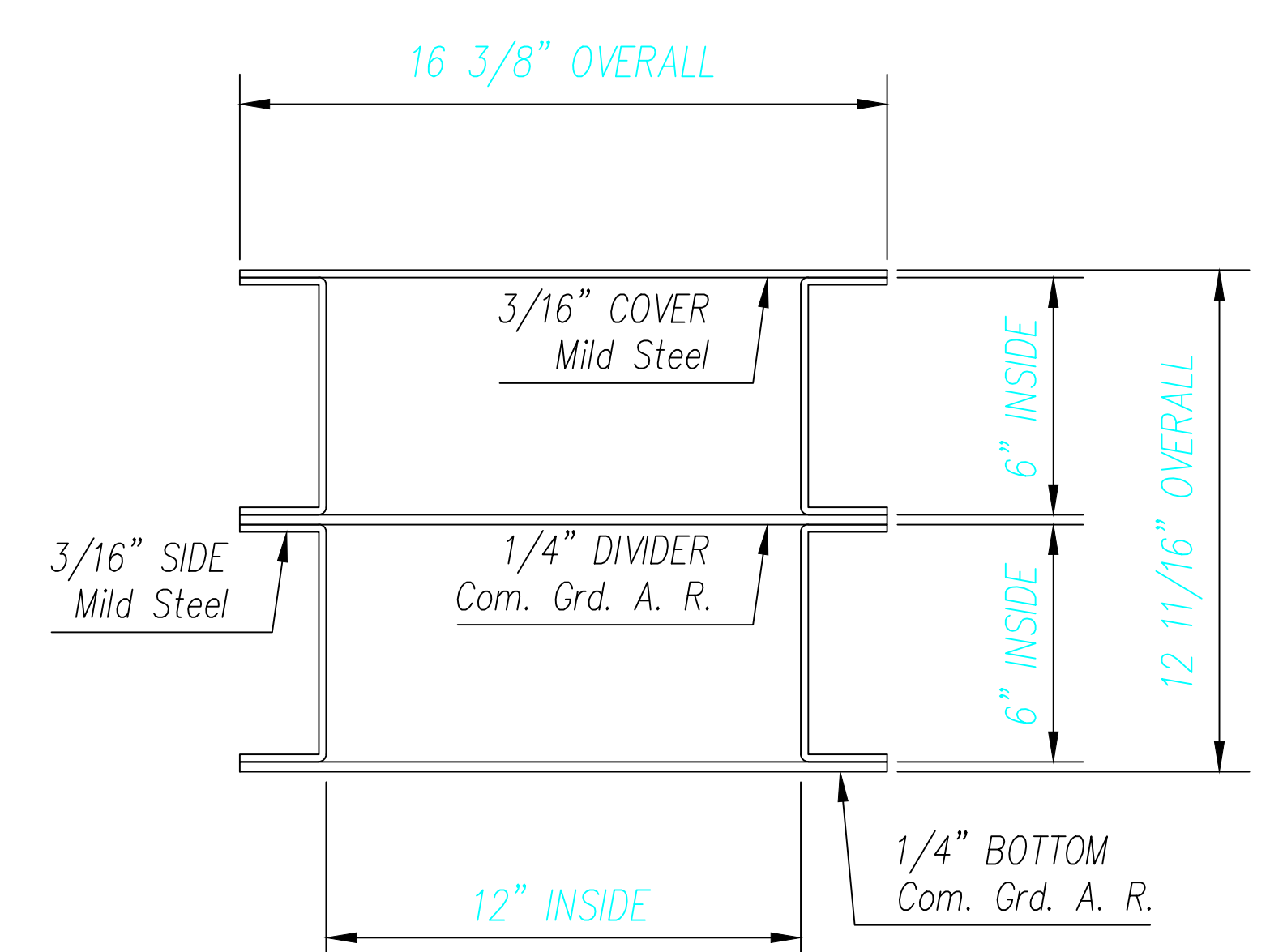
(1)-REQUIRED. MK. NO. 08-2188-002-003



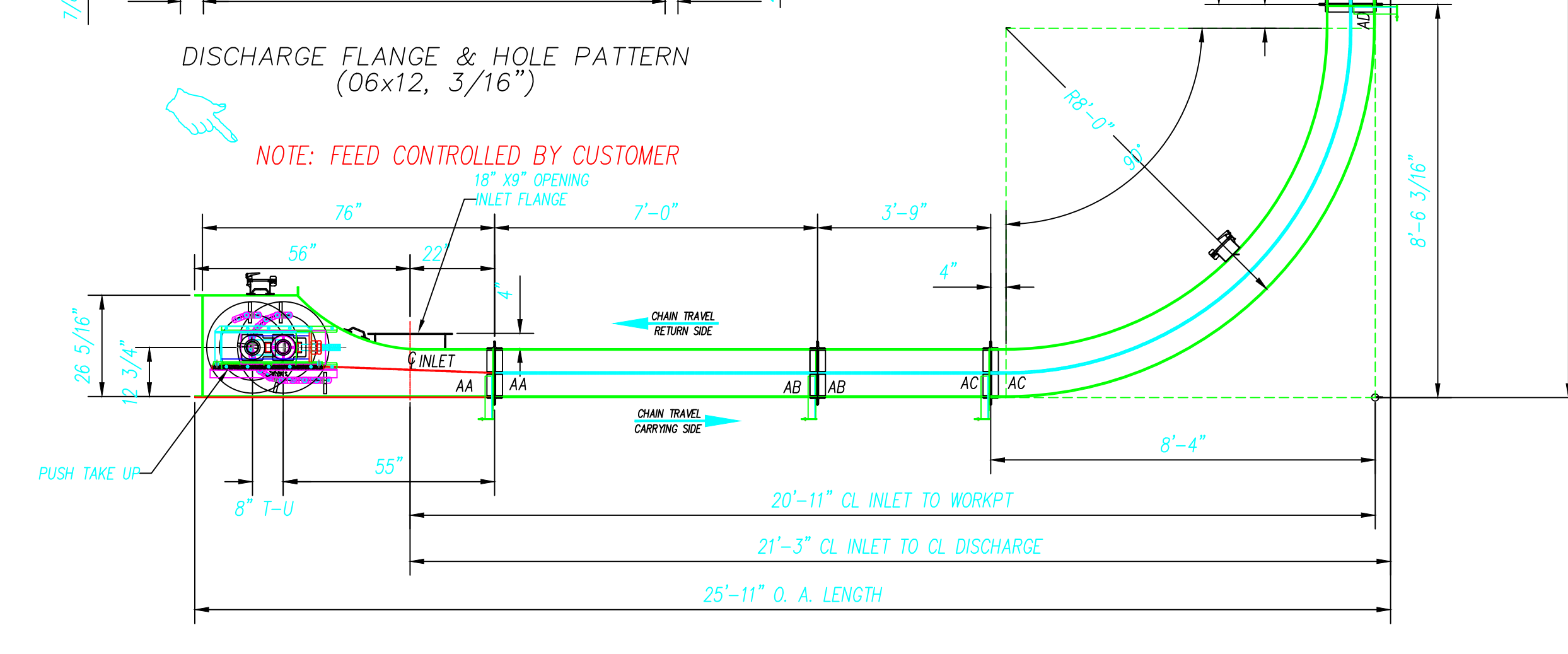
(1)-REQUIRED. MK. NO. 08-2188-002-002



NOTE: FEED CONTROLLED BY CUSTOMER



(LOOKING TOWARD HEAD SECTION)



6" X 12" BULK-FLO CHAIN CONVEYOR
MK. NO. 08-2188-002-001
TAG: FEATHER MEAL ELEVATION DRAG TO TANKS

-FINAL DRAWING-
RELEASED FOR CONSTRUCTION
TRAMCO TRAMCO, INC.
WICHITA, KANSAS
DATE: 12/11/2008
FABRICATION IS PROCEEDING IN ACCORDANCE WITH INFORMATION SHOWN ON THIS DRAWING. CHANCES MAY RESULT IN DELAYED SHIPMENT AND ADDITIONAL CHARGES.

- ~START-UP NOTES:~**
- CHECK ALL TROUGH INTERIOR SURFACES FOR ALIGNMENT BEFORE START-UP.
 - CHECK ALL CARRY-BACK JOINTS FOR PROPER ALIGNMENT BEFORE START-UP.
 - ADJUST CHAIN TENSION BEFORE START-UP.
 - CHECK INTERIOR OF CONVEYOR FOR FOREIGN OBJECTS BEFORE START-UP.
 - DO NOT ATTEMPT TO WORK ON THIS CONVEYOR UNLESS MOTOR HAS BEEN LOCKED OUT!!!

- ~GENERAL NOTES:~**
- CONVEYOR HEAD SECTION TO BE BOLTED TO ADJOINING INTERMEDIATE SECTION.
 - CONVEYOR TAIL SECTION TO BE BOLTED TO ADJOINING INTERMEDIATE SECTION.
 - CONVEYOR CHAIN TAKE-UP ASSEMBLIES TO HAVE CONTRASTING COLOR FLIGHTS.
 - CONVEYOR COMPONENTS TO BE CHEMICALLY WASHED, (FREE OF ALL WELD, SPLATTER, DIRT, OIL AND RUST), BEFORE APPLICATION OF TRAMCO STANDARD PAINT SYSTEM.
 - CONVEYOR EXTERNAL HARDWARE, (ALL BOLTS, NUTS, WASHERS, BEARINGS, ETC.), TO BE FREE OF PRIMER AND PAINT. (INSTALL AFTER PAINTING PROCEDURE).
 - CONVEYOR CHAIN AND FLIGHT ASSEMBLIES TO BE WIRED IN PLACE FOR SHIPMENT.
 - CONVEYOR HEADSHAFT TO EXTEND RIGHT HAND, (NEAR SIDE).
- EST. DRIVE WT. = 624 LBS
EST. CONVEYOR WT. = 8,615 LBS

CONVEYOR DATA

CUSTOMER P.O. N.O.	08-14318-5-2
CUSTOMER I.D.	FEATHER MILL DISTRIBUTION DRAG TO TANKS
CONVEYOR SIZE	6" X 12"
CONVEYOR LENGTH	27'-8" OVERALL
CONVEYOR SPEED	50 FPM
CHAIN TYPE	WH-124 CHAIN, 120' LG., 16.00" SPACING
CONVEYOR CAPACITY	750 CUFT/HR, 15 TPH (14T/H)
MATERIAL	POULTRY MEAL
HEAD SHAFT SIZE	#3-7/16" TURN DRIVE END TO #2-15/16"
HEAD SHAFT SPEED	11.54 RPM
TAIL SHAFT SIZE	#2-15/16"
LINER	1/4" C.G.A.R
H.P. REQUIRED	5 HP
NOTES:	COVER & SIDE PANEL: 3/16" M.S BOTTOM & DIVIDER PLATE: 1/4" C.G.A.R
CONVEYOR SERIAL NO.	BF-1465

SALES SIGNOFF (DO NOT RELEASE WITHOUT SIGNATURE)	SALESPERSON:	DATE:	CONVEYOR SERIAL NO. BF-1465
THIS DRAWING MAY NOT BE USED OR REPRODUCED WITHOUT PERMISSION.			
PAT 12/18/08 ADDED 2'-0" OF CHAIN WITH 3 FLIGHT & BACKING PLATE PAT 12/18/08 ADDED 2'-0" TO VERTICLE LENGTH	DRAWN: PAT DATE: 12/15/08 CHECKED: CJ DATE: 12/15/08 SCALE: NTS MK. REF.	TITLE: 6" X 12" BULK-FLO CHAIN CONVEYOR FOR: PILGRIMS PRIDE CORPORATION PROTEIN CONVERSION MOUNT PLEASANT, TEXAS	
REV. BY DATE DESCRIPTION	REV. DATE DESCRIPTION	REV. DATE DESCRIPTION	TRAMCO, INC. 1020 EAST 19TH STREET WICHITA, KANSAS 67214 REV. DATE DESCRIPTION 08-2188-002